

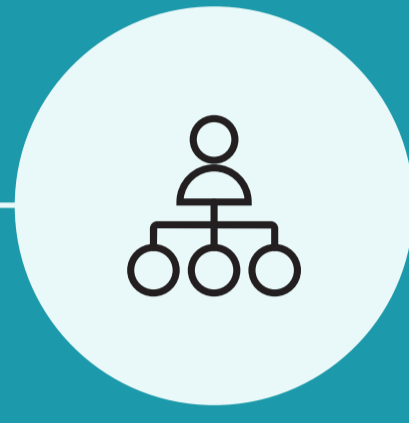
Optimize Performance, Reduce Expense

Improve your VDI and DaaS performance, deliver the best user experience, and reduce service expense with Citrix Workspace Environment Management

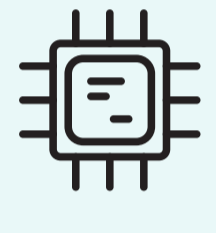


What can WEM help me do?

Lightweight, scalable and easy to configure, Workspace Environment Management (WEM) is designed to help you optimize Citrix and non-Citrix desktop-as-a-service (DaaS) environments and traditional virtual desktop infrastructure (VDI) while minimizing IT spend.



Workspace Environment Management



Resource management



Logon optimization



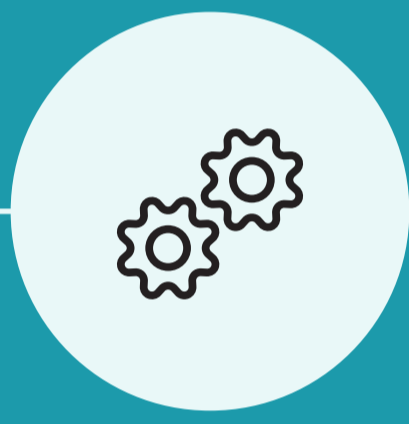
Profile management



Security management



Usage insights



Easy setup and configuration

Improve user experience

Start users off right every day with faster logon times to Azure and Azure Virtual Desktop, saving time and increasing productivity and satisfaction.

Decrease user logon times more than **60%***

How?

- Delay unessential processes from the logon process
- Apply logon-related configuration in the background after logon

Optimize resource management

Give users what they need when they need it with intelligent resource management, improving application responsiveness without compromising the user experience.

Save more than **54%** on cloud compute spend*

How?

- Monitor applications in real time
- Automatically and intelligently adjust RAM, CPU and I/O
- Deliver resources needed by prioritized applications without affecting performance of other users

Realize fast, tangible ROI

Maximize user density to support more users with the same budget — or reduce your overall capacity requirements.

Support **15%** more users for the same cost*

How?

- Increase overall user density on shared multi-user hosts
- Maximize utilization of both cloud and on-premises resources

*Based on Citrix internal testing. Actual results may vary.

Get the most out of your existing and future workspace investments today! See how Workspace Environment Management can help you optimize and better control virtual app and desktop workloads.

Learn more at [Citrix.com](https://www.citrix.com).